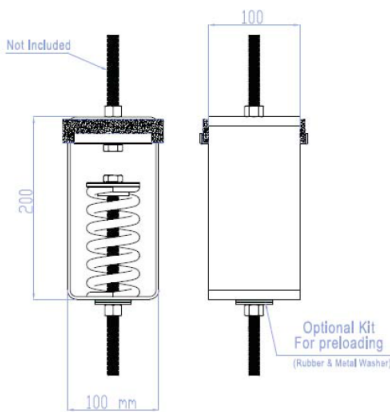


HH.F

Sides View



# HH.F

## HEAVY SPRING HANGERS with Regufoam® Vibration Plus

### Description

The frame of **HH.F** is made from galvanized metal sheet or metal with painted finish. The Suspension screw/rod can vary depending on application needs (not included). Acceptable rod misalignment up to 30° arc, without contacting metal frame.

The elastic element of the hanger is a high quality polyurethane foam, with semi-closed cells, manufactured by the German company BSW under the trademark Regufoam®.

**HH.F** can be supplied with a preloading kit (rubber & metal washer) upon request. Different types of hanging endings can be provided (screw/rod, eye bolt, etc.)

### Applications

**HH.F** can be used as antivibration suspension of machinery (fans, AHUs, Compressors, etc), antivibration suspension of pipes or airducts and suspension of loudspeakers (line array).

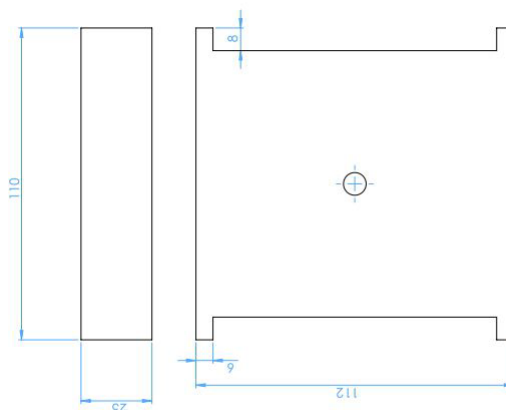
### Selection Table

TYPE	MAXIMUM LOAD (daN)
HH.F 250	250
HH.F 500	500
HH.F 750	750

### Dynamic Characteristics

Deflection: 25 mm at maximum load

Natural Frequency: 3 Hz at maximum load



Design and Production according to Quality Management System ISO 9001.2008 & Environmental Management System ISO 14001.2004