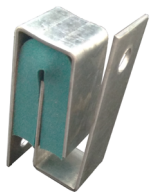


SC.F/ Thickness 50mm



SC.F/ Thickness 25mm

# SC.F

## WALL CONNECTION

### Description

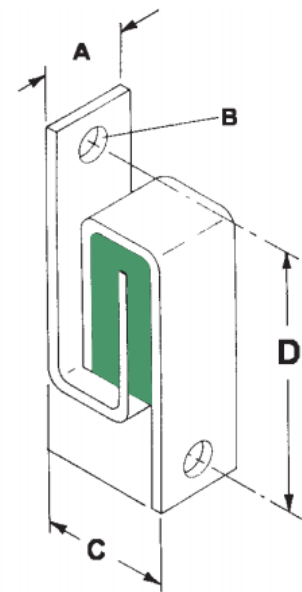
Anti-vibration wall connection **SC.F** is used in order to add structural integrity of long and tall gypsum board walls, which are mounted on pads or based on floating floor. It prevents any direct connection between the double walls, and increases their stiffness.

Additionally it prevents wall backling during earthquakes. It is useful when a secondary wall is applied for improved sound insulation where rigid connections will cause an unwanted sound bridge.

**SC.F** consists of a metal sheet, suitable modulated. The polyurethane elastomer Regufoam® sheet is placed internally to absorb positive and negative axial forces. The pass-through SC.Few does not come in contact with the metal frame, so that no **sound bridge is created**.

### Selection Table

TYPE	DIMENSIONS A x B x C x D (mm)	MAX AXIAL RESTRAINT (daN)
SC.F.1	25 - 8 - 40 - 70	30
SC.F.2	50 - 8 - 40 - 70	60



Design and Production according to Quality Management System ISO 9001.2008 & Environmental Management System ISO 14001.2004